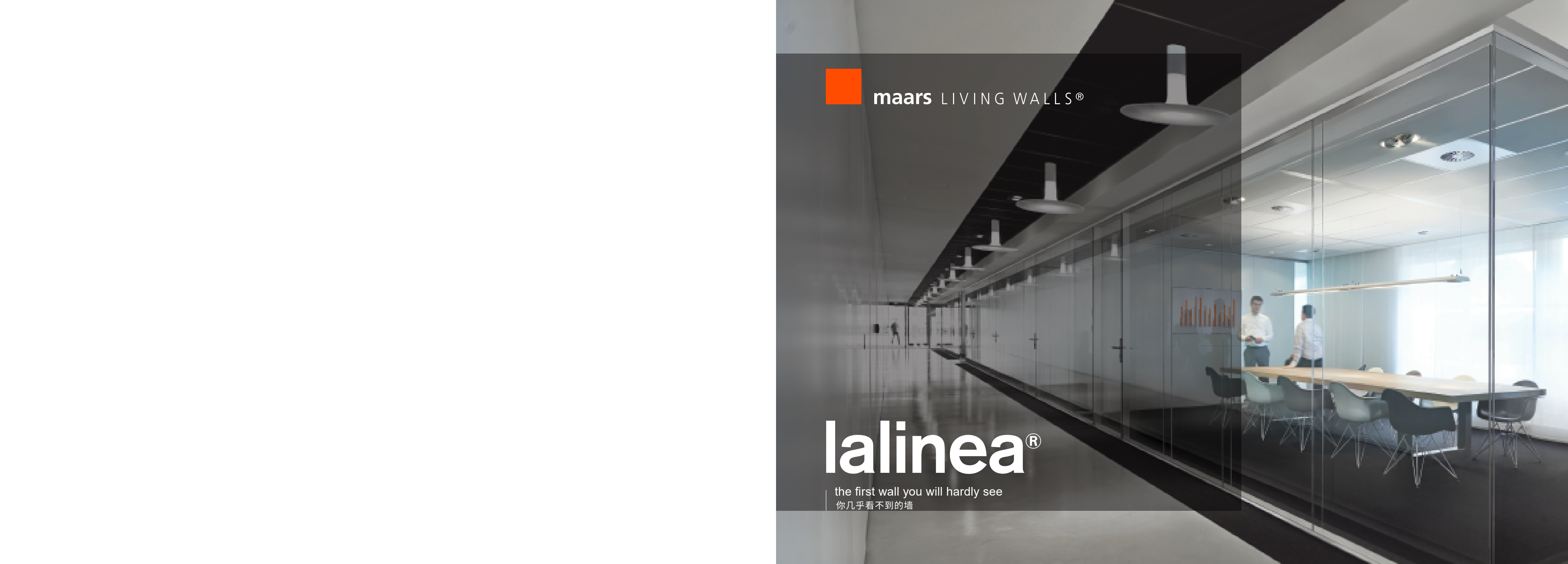




maars LIVING WALLS®

lalinea®

the first wall you will hardly see
你几乎看不到的墙



At Maars, we are always looking for ways to improve the environment and create workplaces where people feel comfortable and perform in the best possible way. That is why we came up with the idea of Living Walls.

An inspiring concept of remountable, integrated wall solutions for healthcare, office buildings, airports, education, hospitality, industry and retail, among others.

The most visionary architects worldwide choose Living Walls.

They have seen us as the supplier of innovative wall solutions for over 75 years. Solutions that contribute to the productivity and well-being of employees as well as being distinctive due to their sustainable and circular nature.

In this way, we want to surprise and inspire people. By providing a unique visual experience, optimal comfort, well-being, security and privacy. Sustainable, environmentally-friendly and with Cradle to Cradle certification.

Welcome to the world of Maars!

一直以来，马尔斯在不断地探寻提升环境和为人们营造舒适高效工作场所的方法，为此我们提出了“Living Walls”的理念。

“Living Walls”体现于我们的墙体产品能够灵活应用于医疗、办公、机场、教育、酒店、工业和零售等领域，真正实现装配式、可重复安装。

全球最有远见的设计师都在选择“Living Walls”。75年以来，他们将马尔斯视为引领和创新墙体解决方案的供应商，来帮助他们设计出更能激发员工创造力、提升工作幸福感的优秀作品，且因可持续和循环利用的性质而与众不同。

通过这种方式，我们为世人来带惊喜和启发。正是基于 Cradle to Cradle 可持续发展的理念，马尔斯向业界提供了独特的视觉体验，最棒的舒适度、幸福感、安全感和隐私感。

欢迎来到马尔斯的世界！





Lalineia is Maars most minimal system best suited for executive spaces and high end design. The patented telescopic profile and glass-clip system make this double-glazed solution unique. The seamless attachment allows you to create clean lines for a nearly invisible perspective. Combine with our Lalineia Pivot door for a fully seamless, flush wall.

Lalineia 是马尔斯最高端极简的系统，非常适用于行政空间和高端设计。获得专利的伸缩型材和玻璃卡扣系统使这种双层玻璃解决方案独一无二。玻璃之间的无缝连接可以为您创造几乎不可见的简洁线条，结合 lalineia 隐形天地轴门，可打造出光滑无缝的平整墙体。

invisible perspectives

全景无界





remountable

可重复安装

lalinea

Sustainability and circularity are in the center of Maars Living Walls design. We create products that are designed to excel in modular construction and re-use as a standard practice. The ability to reuse our products is both good for the environment and also the flexibility of your space.

The key sustainability features of lalinea:

- Completely remountable
- Raw materials are fully recyclable and reusable without loss of quality
- No adhesives or use of harmful substances

可持续和循环利用，是马尔斯 Living Walls 的核心理念。我们创造的产品旨在模块化结构中表现出色，并作为标准做法重复使用。产品的重复利用性既有利于环境，也有利于实现您空间的灵活性。

lalinea 的主要可持续性特征：

- 可重复安装
- 原材料可完全回收和重复使用且不会损失品质
- 不使用粘合剂和有害物质



reduce 减量化
reuse 再利用
recycle 可循环



less is more, the art of leaving out

lalinea is revolutionary at every level, thanks in part to two patents. lalinea has a unique profile that accommodates tolerances without affecting the clean lines. The way the glass is connected to the profile is also patented. The glass panels have a invisible attachment to the profile pack. The continuous glass surface with subtle seams and glass doors with invisible hinges gives your interior a clean look.

The beauty of lalinea is mainly what you don't see. Less is more, the art of leaving out. Minimal lines, invisible hinges, narrow lock, minimal doorframe and glass walls without vertical profiles.

lalinea 在各个层面都是革命性的，得益于该产品的两项专利。一是 lalinea 具有独特的天地轨，可调节公差也不会影响简洁的线条，二是玻璃与型材的专利隐框玻璃连接，玻璃面板与型材间有一个不可见的连接附件。平滑连续的玻璃墙体配以隐形天地轴玻璃门将会使您的室内看起来极简干净。

lalinea 的美丽来自于你所看不到的部分。少即是多，留白的艺术。极简线条、隐形天地轴、独特窄体锁、极窄门框和无立柱结构都使得 lalinea 展现出独特的美感。

lalinea

少即是多，留白的艺术



unseen qualities

无形的品质

9/20



协同

lalineia

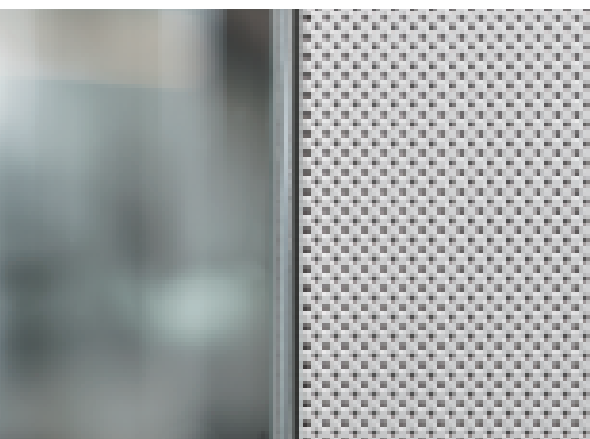
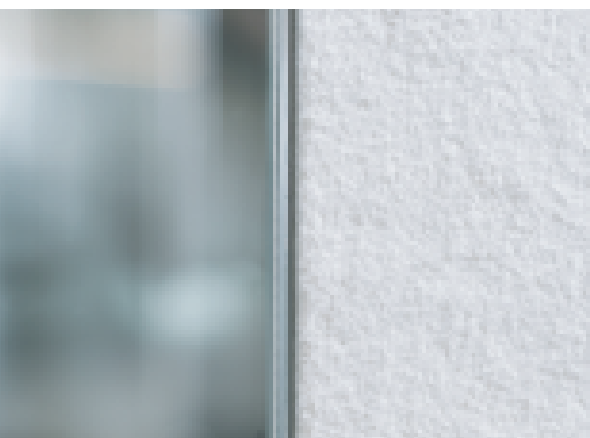
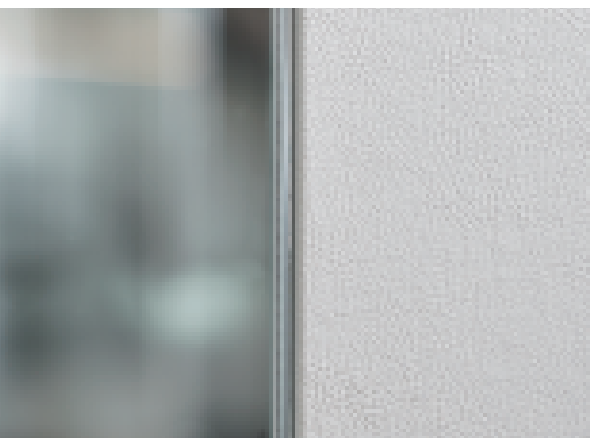
lalinea is the only wall system with its own door. Thanks to the invisible PIVOT hinge and a telescopic profile, the door flows seamlessly into the wall. The lalineia door is also available in a high-performing acoustic version.

lalinea 独有的门扇系统，基于隐藏式的 PIVOT 天地轴五金和可调节式的结构型材，门扇可以无缝式连接隔墙系统，同时能提供高隔音性能的产品。



11/20





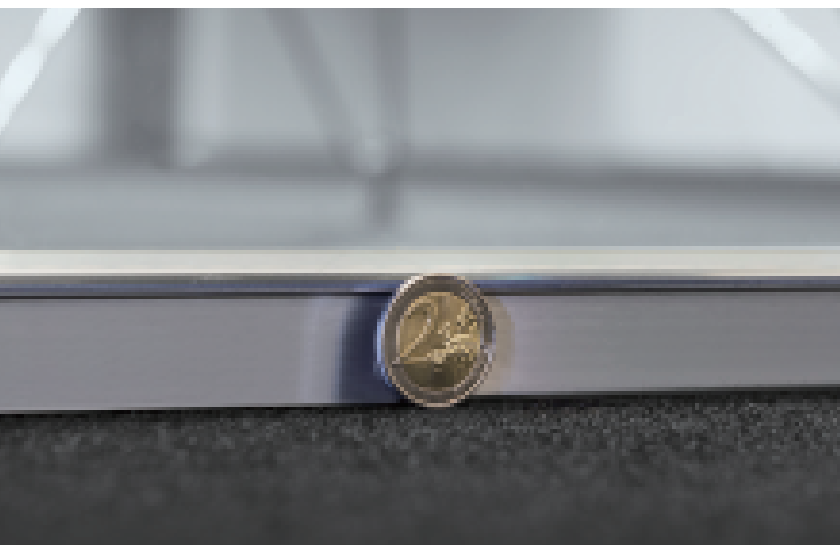
perfect fit

lalinea is the perfect fit for your interior design. Create an invisible top-of-the-line fit thanks to minimal lines and barely visible finishing options and detailing.

完美契合

lalinea 是您室内设计的最佳拍档，借助最少的线条和几乎不可见的结构设计，打造一款隐形的顶级设计产品。





features & benefits

lalinea combines a high-end wall system with maximum acoustic performance.

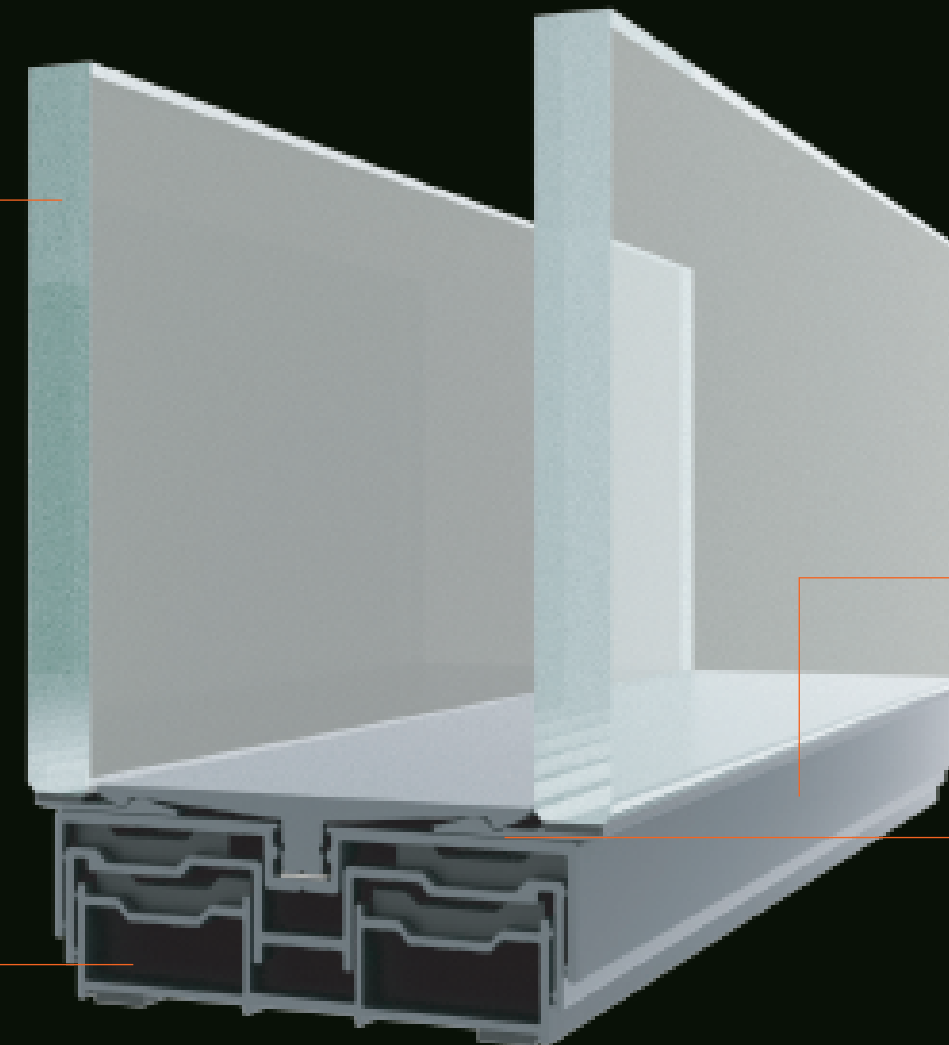
- No visible hinges due to unique pivot construction
- Full glass T-connections and corner solutions
- Flush glazing
- Unique narrow lock
- Minimalist, consistently continuous bottom and top profiles
- Cradle to Cradle Silver certification

特点与优势

lalinea 将高端隔断系统与最佳声学性能相结合。

- 独特的隐形天地轴结构，无可见铰链
- 全玻璃 T 型连接和转角解决方案
- 与玻璃齐平连接
- 独特窄体锁
- 纤细的底部和顶部的连续线条
- Cradle to Cradle 银级认证

Glass thickness
12 mm / 1/2"
玻璃厚度: 12 mm



Profiles with a height of only 22 mm
型材高度最窄仅为 22 mm

Patented flush glass connections for bottom and top profiles
底部和顶部的专利隐框玻璃连接

Patented telescopic floor and ceiling connection
可调节的专利天地轨连接

committed to circularity

For Maars, the well-being of people in any space is essential. We are always looking for sustainable, responsible solutions and we are constantly researching new production techniques. Reduce, reuse and recycle are firmly rooted in our business philosophy: from eco-friendly coatings to CO₂ offsets and the 5S 'lean manufacturing' methodology. Our products help improve your BREEAM, LEED and WELL scores. We have established an integrated operational management system for all critical quality, environmental and safety processes in order to have full control over our quality, environmental and health & safety policies. By scrutinising the entire production process, we can be more efficient in terms of production while reducing energy consumption. Maars' ongoing commitment to innovation and circularity has been recognised with a Cradle to Cradle Bronze certificate for all our wall systems and ISO-9001 / ISO-14001 certification. (Be sure to ask about our certified products.)



致力于循环

马尔斯始终把人类的空间福祉放在首位。我们一直在寻找可持续、负责任的解决方案，并不断研究新的生产技术。“减量化、再利用、可循环”深深植根于我们的经营理念：从环保涂料到二氧化碳抵消和5S“精益制造”方法论。同时，我们的产品也有助于提高 BREEAM、LEED 和 WELL 分数。为了能完美掌控品质、环境、健康和安全管理政策，马尔斯设立了一套完整的操作管理系统，通过此系统，质量、环境和安全的关键工序都能得以保障。通过对整个生产过程进行审查，我们可以在降低能耗的同时提高生产效率。马尔斯对创新和循环的持续承诺受到了广泛认可，我们的所有墙体都获得了 Cradle to Cradle 的铜级认证和ISO-9001 / ISO-14001认证。（请务必咨询我们的认证产品）



lalineia

create and design interiors beyond your imagination

Maars 4D provides you with intelligent, highly visual and intuitive space planning software to make specifying and selling products easier. Maars 4D enables you to create realistic visualisations, including a moving fly through of your future space. This allows you to provide your customer a unique experience before you have even started the installation.

马尔斯4D为您提供智能、高度可视化和直观的空间规划软件，使指定和销售产品更便捷。马尔斯4D使您能够创建逼真的可视化效果，包括在未来空间中移动飞行。这使您甚至可以在开始安装之前为您的客户提供独特的体验。

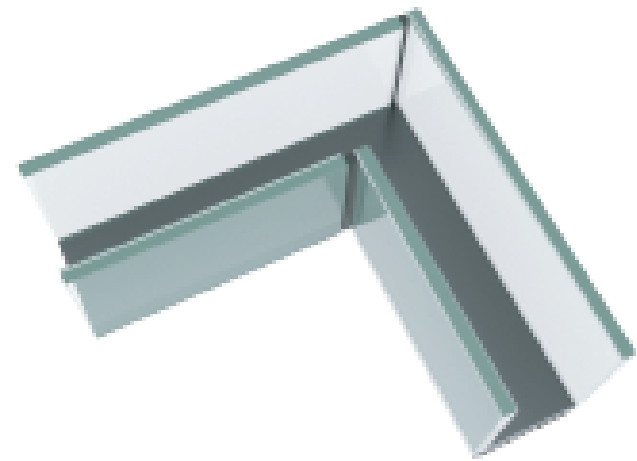


visit www.maarslivingwalls.com / www.maarslivingwalls.com.cn to learn the possibilities

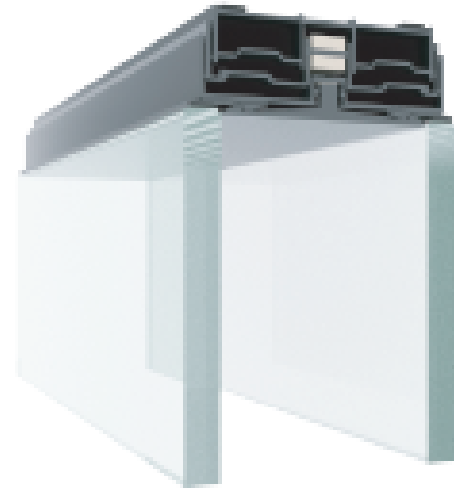
访问 www.maarslivingwalls.com / www.maarslivingwalls.com.cn 了解更多

17/20

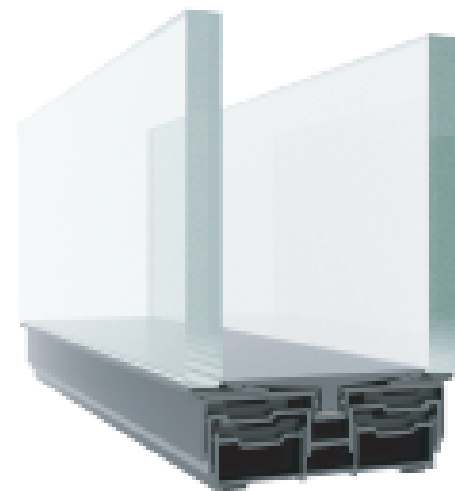
great performance, unique details



| **Open glass corner joint**
开放式玻璃转角



| **Telescopic ceiling profile**
伸缩天轨



| **Telescopic ground profile**
伸缩地轨

出色的性能
独特的细节

technical specifications 技术参数

DESCRIPTION 介绍

Demountable double glass system wall
可拆卸式双层玻璃隔断系统

CONSTRUCTION 结构

Wall thickness: 100 mm / 15/16"
Telescopic connections floor / ceiling
made of aluminium profiles.
Vertical partition

墙体厚度: 100 mm

可调节的天地轨连接由铝型材制成

垂直分区

GLAZED MODULES 玻璃系统模块

Without intermediate vertical profiles.
Double-glazing with 12 mm / 15/32" glass
Door Modules
Concealed aluminium door frames with
pivot doors.

Integration of standard 100 mm / 3 15/16"
aluminium door frames possible.

无竖向型材。

双层玻璃系统配 12 mm 厚度玻璃

门模块

带有隐藏式天地轴的铝制门框。

可以匹配标准 100 mm 铝制门框。

STANDARD SIZES 标准尺寸

Height 3,000 mm / 9' 10 1/8"

Width 900 / 1,200 mm /

2' 11 7/16" / 3' 11 1/4"

Nominal skirting height

• 22 mm / 7/8" Ceiling

• 22 mm / 7/8" Floor

Weight approx. 67 kg/m²

高度 3,000 mm

宽度 900 / 1,200 mm

上下型材高度

• 上型材: 22 mm

• 下型材: 22 mm

重量约 67 kg/m²

FINISHES 饰面

• Glazing

- Several different options are possible,
such as acoustic laminated, coated,
privacy glass or sandblasted.

• Glass

- 种类繁多, 例如隔音夹胶玻璃、烤漆、隐私
玻璃等。

INSTALLATION TOLERANCES 安装公差

Floor +/- 6 mm / 1/4"

Ceiling +/- 6 mm / 1/4"

地面: ±6 mm

天花: ±6 mm

SOUND 隔音

Weighted sound insulation index in
accordance with

EN ISO 717-1

Glazed modules: up to RW 48 dB / 48 STC

Glazed door modules: up to RW 39 dB /
39 STC (Hinged doors)

Glazed door modules: up to RW 41 dB /
41 STC (Standard hinged doors)

标准隔音参数参照: EN ISO 717-1

玻璃系统模块: 高达 RW 48 dB

玻璃门模块: 高达 RW 39 dB (天地轴门)

玻璃门模块: 高达 RW 41 dB (标准铰链门)

LIVING OPTIONS 活性选项

Maars offers a wide range of options that
can be integrated into our wall system,
depending on the wall type. Ventilation
studs, sound panels, cabinets, shelf
supports, climate control panels, dynamic
light, multimedia, fabric covered panels,
privacy glass or Maars Magnetics. Ask
your Sales Project Manager about our total
product range.

根据墙体类型, 马尔斯提供可整合入隔断系统的广泛选
项。通风龙骨、吸音板、橱柜、货架系统、温控板、动
态照明、多媒体、布艺包板、隐私玻璃以及各式马尔斯
磁吸挂件, 更多选项请与我们的销售联系。

maars LIVING WALLS®

12F South block, Guoco Changfeng City, No. 1, Lane 556,
Daduhe Road, Putuo District, Shanghai
上海市普陀区大渡河路556弄1号国浩长风城南楼12层

T+86 021 3251 1505
Info@maarsgroup.com.cn
www.maarslivingwalls.com.cn



products 产品

Metaline
String²
Panorama
Horizon

laline
lineaCube
Doors
Living Options

expertise 专长

Office 办公室
Care & Cure 医院
Education 教育
Revitalisation 翻新

Airport 机场
Hospitality 酒店
Industrial 工业
Automotive 汽车